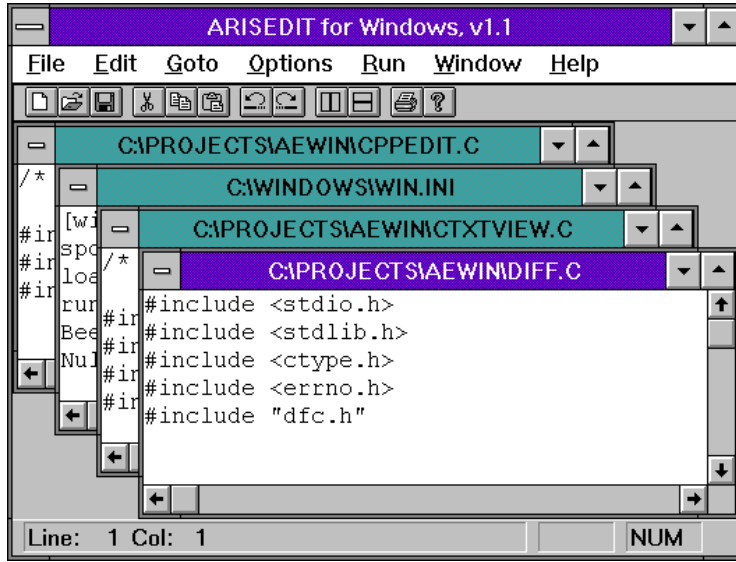


ARIS EDIT Lite

for Microsoft Windows™

Version 1.4



ARIS Informations-Systeme
Parkstr. 2
D-85646 Anzing
Germany
Phone: +49 8121-4562-4
Fax: +49 8121-4562-5

Document release date: February 25, 1994
Printed in Germany
Document AELITE.DOC

Information in this document is subject to change without notice and does not represent a commitment on the part of ARIS. The software described in this document is furnished under a licence agreement or nondisclosure agreement. The software may be used or copied only in accordance with the terms of the agreement. It is against the law to copy the software on any medium except as specifically allowed in the license or nondisclosure agreement. No part of this manual may be reproduced or transmitted in any form or by any means, electronic or mechanical, including photocopying and recording, for any purpose without the express written permission of ARIS.

(c) 1994 Alexander Riedel Informations-Systeme
All rights reserved

Microsoft Windows is a trademark of Microsoft Corp.

ARIS LICENSE AGREEMENT

This is an agreement between you, the end user, and us, Alexander Riedel Informations Systeme. By opening the sealed package, you are agreeing to be bound by the terms of this agreement. If you do not agree to these terms, promptly return the unopened disk package and all accompanying materials to your dealer or to us for a refund.

1. License

We grant you the right to use the enclosed software program (the Software) on a single terminal connected to a single computer. You may not use this software in a network or otherwise use it on more than one computer or terminal at a time.

2. Copyright

The Software is owned by us and is protected by the German copyright laws and international treaty provisions. You must treat the Software like any other copyrighted material, such as book or musical recording. You may, however, either (a) make one copy of the software for backup or archival purposes, or (b) transfer the software to a single harddisk, provided you keep the original solely for backup or archival purposes. You may not copy any written materials accompanying the Software.

3. Other restrictions

You may not rent or lease the Software, but you may transfer it and the accompanying written materials on a permanent basis provided you retain no copies and the recipient agrees to the terms of this agreement. You may not reverse engineer, decompile, or disassemble the software.

4. Dual media software

If this package contains both 3 1/2 inch and 5 1/4 inch disks, then you may use only the disks appropriate for your single-user computer. You may not use the other disks on another computer or transfer them to another user except as part of a permanent transfer of all Software and written materials.

5. Limited warranty

We warrant that the Software will perform substantially in accordance with the accompanying written materials for a period of 90 days from the date of receipt. Any implied warranties on the Software are limited to 90 days.

6. Remedies

Our entire liability and your exclusive remedy shall be, at our option, either (a) return of the price paid or (b) repair or replacement of the Software that does not meet our limited warranty and that is returned to us with a copy of your receipt. Our limited warranty is void if failure of the Software has resulted from abuse or misapplication. We warrant the replacement Software under this limited warranty for the remainder of the original warranty period or 30 days, whichever is longer.

7. No other warranties

We disclaim all other express or implied warranties, including the implied warranties of merchant ability and fitness for particular purpose. Our limited warranty gives you specific legal rights. You may have other rights, which vary from state to state.

8. No liability for consequential damages

In no event shall we be liable for any damages whatever, including loss of profits, arising out of the use or inability to use this software, even if we have been advised in advance of the possibility of such damages.

TABLE OF CONTENTS

1.	Introduction	5
2.	Installation	5
3.	The menus of ARIS EDIT Lite	5
3.1	The File menu	6
3.2	The Edit menu	7
3.3	The Goto menu	7
3.4	The Options menu	7
3.5	The Run menu	8
3.6	The Window menu	8
3.7	The Help menu	8
4.	Loading files into ARIS EDIT Lite	8
4.1	Using the "File open" dialog	8
4.2	Loading files by command line	9
4.3	Using drag&drop from the Windows File Manager	10
4.4	Using the MRU list	10
5.	Editing files with ARIS EDIT Lite	10
5.1	Moving the cursor	10
5.2	Inserting and deleting text	11
6.	Using the Windows Clipboard	13
7.	Matching parenthesis and braces	14
8.	Searching for a Pattern	14
9.	Using the mouse	14
10.	The smart icon bar	15
11.	The keyboard layout of ARIS EDIT Lite	17

1. Introduction

ARIS EDIT Lite is a powerful text editor for Microsoft Windows. You can use ARIS EDIT Lite as a perfect replacement for the standard text editor of Windows, NOTEPAD.

While NOTEPAD is only able of editing one file at a time and can only load files of approximately. 32KBytes in size, ARIS EDIT Lite allows you to edit a maximum of 32 files at once, where each file is not limited in its size. Well, two limitations it has: The size of all loaded files may not exceed the amount of available virtual memory and the maximum line length is limited to 32536 characters.

Please consult your Windows manual for more information about virtual memory and how to increase its size if you encounter a situation where ARIS EDIT Lite is not able to load a file.

Aside from overcoming the limitations of NOTEPAD, ARIS EDIT Lite offers a wide variety of advanced features such as:

- Advanced printing with line numbers and page headers
- Brace matching
- Built in GREP for scanning files on the hard disk
- Change the working directory on the fly
- Direct jump to lines
- Drag and drop support
- Easy font selection for every window
- File size only limited by available virtual memory
- Lines may be up to 32K characters wide
- Loads multiple files at once
- MRU (Most recently used) list of accessed files
- Multi level undo and redo
- Regular expression search
- Smart icons for the most common functions
- Smart insert with the mouse

2. Installation

Installing ARIS EDIT Lite to your hard disk is an easy process. Simply insert the disk into a floppy drive and run the setup program. To do this, select "Run" from the "File" menu of the Windows Program Manager and enter "A.SETUP". If you have placed the installation disk into another drive than A: you have to substitute the A with the letter of the drive you are using.

Now an automated installation procedure prompts you for a directory. If the default installation directory (C:\AELITE) does not suit you, simply type in another drive and/or directory. If the directory you are specifying does not yet exist it will be created by SETUP.

Now SETUP will copy all necessary file to your hard disk. Please note that some DLLs (Dynamic Link Libraries) will be copied to the system directory of your Windows installation if they do not already exist or if older versions of this DLLs are detected. These DLLs are placed in this Windows subdirectory rather than in the installation directory as some other programs use this DLLs too and in order to ensure that you have not multiple copies of the same DLL on your hard disk, they are installed to that directory.

SETUP will also copy an AELITE.INI file to your Windows subdirectory. This file is used by ARIS EDIT Lite to store its configuration. Again this file is not installed to the installation directory you specified. This is done because the Windows directory is the common place for initalisation files to reside.

3. The menus of ARIS EDIT Lite

The menus of ARIS EDIT Lite behave just like that of any other Windows program. If you are not yet familiar with the usage of the pull down menus of Windows applications, please consult your Windows manual for a description.

Several topics in the menus have so-called accelerator keys assigned to them. These keys are displayed to the right of a topic if the menu is open. While editing in a file you may use these accelerator keys to access menu functions without opening the corresponding menu.

3.1 The File menu

The File menu contains all topics that are associated with the handling of files, such as loading and saving.

- Open... This topic opens a dialog box where you may select one or more files for opening. After pressing the OK button, each file will be read into memory, a new window will be created for every file and the first page of the file will be displayed. For a deeper discussion of file opening please refer to chapter 4.
- New This topic opens an empty window for a new file. The name ARIS EDIT Lite initially assigns to this file is "Untitled". If you attempt to save this file ARIS EDIT Lite will prompt you for a name for this new file.
- Read... This menu topic allows you to select an existing file for inserting it at the current cursor position.
- Directory... This menu topic allows you to change the current working directory. The dialog behind this topic also allows you to access a history of working directories for easy switching between different directories.
- Close This function closes the currently active window. The contents of the window is discarded. If the file in that window has been changed after it was last saved, you will be prompted if you want to save it now. If you decide not to save your changes here, all changes will be lost.
- Close all Selecting this topic closes all editing windows at once. If any of the files in these windows have been changed after last saved, you will be prompted if you want to save that file now.
- Save This topic saves the file in the current window under its original name. You will not be prompted for overwriting if this file already exists, since ARIS EDIT Lite assumes that you have loaded the file under this name.
- Save as... This menu item allows you save a file under a different name. If you specify a name of a file that already exists, you will be prompted for overwrite permission.
- Save all This topic walks through all opened editor windows and, if necessary, saves the file accordingly. Files that have not been changed after loaded or saved last remain untouched.
- Grep... This function allows you to scan files on your disk for regular expressions. Several options allow you to exactly specify which files should be scanned.
- Print... This menu item prints the file in the currently active window. Before the actual printing takes place you are able to change the printer and/or its setup. The current adjustments from the Print Layout dialog will be used.
- Print layout... With this topic you are able to configure the layout of the printing output of ARIS EDIT Lite. You can select the border size, include or exclude line numbers or define page headers.
- Exit By selecting this menu topic you end your current session with ARIS EDIT Lite. All currently open windows will be closed at once. If any file in an open window has been changed you will be prompted for saving it.

3.2 The Edit menu

The edit menu contains several topics for clipboard handling. It also enables you to reverse editing operations or to repeat reversed operations.

- Undo This function reverses the last editing operation. The amount of operations that can be reversed is limited by a buffer of 4096 bytes. If you find this to small from your experience, please contact our technical support.
- Redo This item reverses the last undo operation. Whenever you have used Undo to much you can easily recover your work.
- Copy By using this topic the highlighted text from the currently active window is copied to the Windows clipboard. You can use the Paste function to insert this text in another file or in another location in the same file. As the text copied to the clipboard is placed there as ASCII text, this text is available to other applications too.
- Cut This function too copies the marked text from the currently active window to the clipboard. Additionally the marked region is deleted from the text. You may use this topic in combination with the Paste topic to move text from one location to another.
- Paste This topic inserts the contents of the Windows clipboard at the current cursor position in the active window.
- Clipboard This menu item start the Windows clipboard in order to show you its contents.

3.3 The Goto menu

The goto menu contains all items that allow you to jump to certain locations in the active window. You can search for a string, replace occurances of strings by other strings or jump to a specific line number.

- Search... This topic causes the Search dialog to pop up. Into this dialog you can either enter a simple string or a regular expression you want to search for.
- Replace... By selecting this topic ARIS EDIT Lite pops up the "Search and Replace" dialog. You can search for a specific string and, when found, decide for each occurrence of this string whether to replace it by another string or not.
- Line number... This function allows you to directly jump to a specific line number. If you enter a number which is higher than the actual number of lines in that file the cursor will be placed at the beginning of the last line in the file.

3.4 The Options menu

This menu enables you to adjust the behavior of ARIS EDIT Lite to your preferences.

- Preferences... After selecting this topic a dialog enables you to adjust the length of a tab stop (default: 8) and to specify whether ARIS EDIT Lite should perform automatic indenting. That is, when you insert a new line, if ARIS EDIT Lite should copy the level of indention from the line above. This feature is switched on per default.
- Font... This item lets you select the font for the current window. Please note that you can select an individual font for each single window. However, any newly created window (by opening another file) will have the font you selected last. The fonts you are able to choose from are only the fixed pitch fonts installed in your system. As ARIS EDIT Lite is intended as an ASCII file editor and not as a word processor the overhead of dealing with variable pitch fonts

cannot be justified.

3.5 The Run menu

This menu allows you to start other programs from any ARIS EDIT Lite session without switching back to the Program Manager or the Windows File Manager.

- Programm... This topic provides a point and shoot dialog, where you can easily select the program file (COM, EXE, BAT) you want to execute. There is no difference whether you select a DOS or a Windows program file. Each will be executed at once.
- DOS This item starts a DOS box.

3.6 The Window menu

- Tile The Tile command redisplay windows on your desktop in such a way that each window becomes the same size.
- Cascade The Cascade command arranges the windows on your desktop in a tiered or cascading fashion.
- Arrange icons The Arrange icons command rearranges the icons on your desktop into neat rows and columns.

3.7 The Help menu

- Keyboard layout... This shows you a table which describes the shortcut keys of ARIS EDIT Lite and their functions.
- Using the mouse... You will get information how you can use the mouse in ARIS EDIT to copy, delete and paste text.
- About ARIS EDIT Lite... This topic displays version information about ARIS EDIT Lite. When requesting support the version and the build date must be supplied.

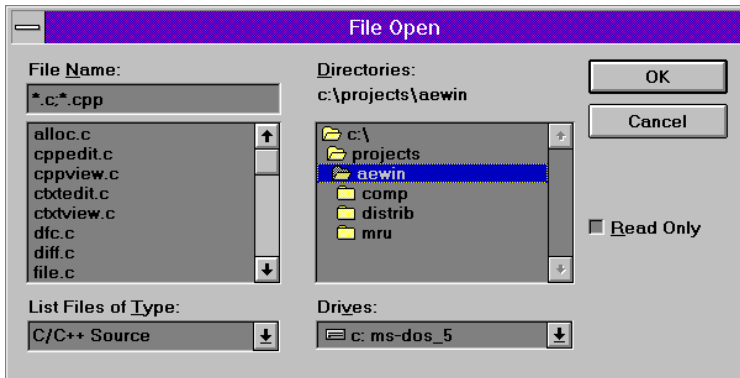
4. Loading files into ARIS EDIT Lite

There are four ways in which you can instruct ARIS EDIT Lite to open an existing file. Each of these four methods are described in the following chapters.

4.1 Using the "File open" dialog

You can use the "File open" dialog to open one or more files. This dialog appears whenever you select the topic "Open..." from the File menu or when you click to the open symbol in the smart icon bar. The picture below shows the smart icon bar of ARIS EDIT Lite.





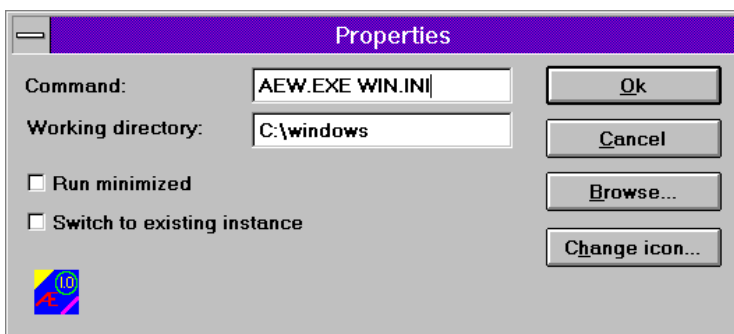
(Picture of File Open dialog)

In the dialog box shown above you can now select one or more files to load. A single file can be loaded by selecting its name in the file list and pressing the OK button. Double clicking on a file name results also in this file being loaded.

For selecting more than one file click to each file's name while holding the Ctrl key on your keyboard down. You will see each file's name becoming highlighted when you click on it. After you have selected all files you want to load press the OK button and ARIS EDIT Lite will load all selected files.

4.2 Loading files by command line

You can instruct ARIS EDIT Lite to load file immediately on startup by specifying their names on the command line. This is specially useful if you want to have several copies of the ARIS EDIT Lite icon in various groups on your desktop, where each icon loads different files. You can copy the icon of ARIS EDIT Lite by clicking on one icon in a group of the Program Manager while holding the Ctrl key down and dragging it to another place. In the properties of such a copy you can now specify the files to load on the commandline. In the picture below you see an example how to load the WIN.INI on startup.



Of course you can enter more than one file at this place. If the files you want to load do not exist in the specified working directory you must supply their full path names (i.e. C:\WINDOWS\WIN.INI).

4.3 Using drag&drop from the Windows File Manager

If you want to edit one or more files in an already running instance of ARIS EDIT Lite you do not need to go through the file open dialog several times. While the file open function allows you to select several files at once, it requires that the files reside in one directory. You can simply grab the files from the Windows File Manager and drag them to the window (or icon if it runs minimized) or ARIS EDIT Lite while holding the left mouse button down. Once the cursor is above the window or icon you simply release the left mouse button (drop the files) and ARIS EDIT Lite will load them.

A good preparation is to include ARIS EDIT Lite in your Autostart group, running it minimized on Windows startup. Whenever you now encounter a file you want to edit or view while browsing your hard disk or a floppy with the File Manager you can simply drag this file to the icon of ARIS EDIT Lite in order to load it.

4.4 Using the MRU list

ARIS EDIT Lite maintains a MRU list (Most Recently Used) of up to eight files you edit. Each time you open a file it is moved to the top of that list while all other files will be moved one place down with the last file dropping out of the list if there are already eight files in it.

If you load a file that is already in the list it also will be moved to the top of the list but with no file dropping out. The list is maintained in the File menu just above the Exit topic. Now if you want to load a file you worked with recently just open the File menu and select the file's name from the list.

5. Editing files with ARIS EDIT Lite

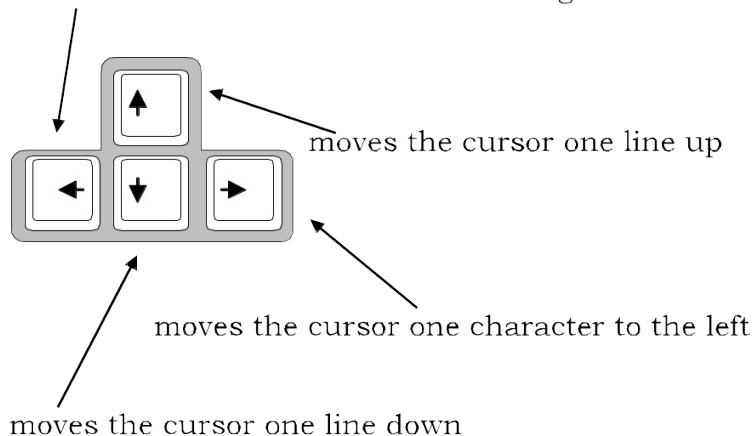
Editing with ARIS EDIT Lite is just the same as with each other editor or word processor. However, the following chapters will give you a brief explanation of the basic editing tasks.

5.1 Moving the cursor

The cursor, also called the caret to mark the difference to the mouse cursor is a full block rather than a vertical line as in many other programs. This is to enhance its visibility on high resolution systems.

This cursor can be moved around in the text by using the keyboard or the mouse. As for the keyboard the so-called cursor keys do what you expect them to do:

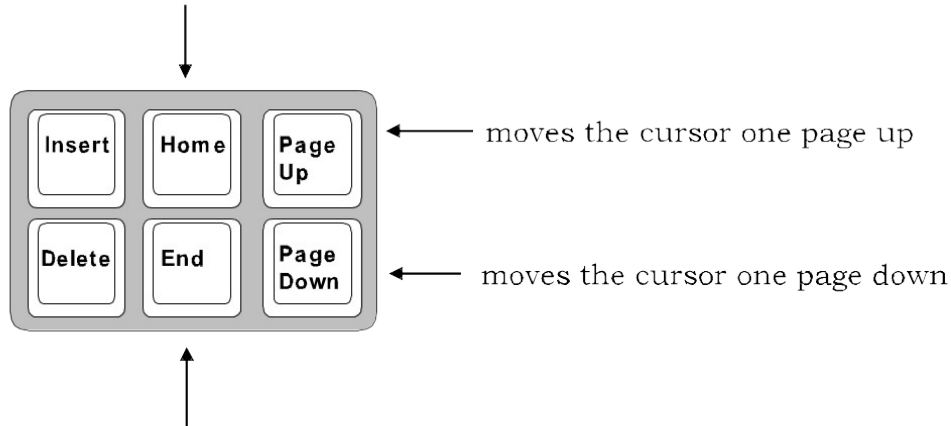
moves the cursor one character to the right



You can also use the left and right arrow keys to jump from one word to the other if you hold down the Ctrl key while pressing a cursor key. The caret will jump to the previous or the next word according to the cursor key you use.

Holding the Ctrl key while pressing the up and down cursor keys results in jumping to the previous or next blank line in the text. Note that lines containing only spaces or tabs are not recognized as blank lines. Some other keys on your keyboard allow you to move in greater jumps through the text. Again these keys do exactly what you may expect according to their names:

moves the cursor to the start of the current line



moves the cursor to the end of the line

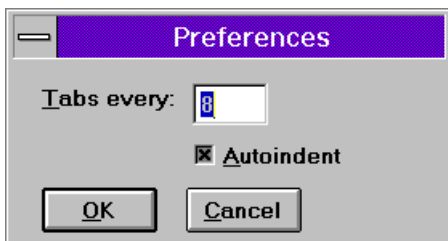
5.2 Inserting and deleting text

Inserting new text into a new or already existing document is just as simple as typing on a typewriter.

Move the cursor to the location where you want to enter new text and start typing. As you do so, you will see the characters you type appear at the current location of the caret. Any subsequent text of the current line will be moved to the right.

If you want to enter a new blank line, just place the cursor at the beginning of the line before which you want to enter a new line and press ENTER. Alternatively you can press the ENTER key at the very end of the line after which you want to insert a new line. The latter let it work just like a typewriter, type your text and press ENTER and you can start typing the next line.

Note that a newly inserted line automatically gets the same indentation as the line above the new line when you selected "Autoindent" in the preferences as shown in the following picture.



That way you can keep an indentation as long as you wish. As the indentation is simply copied from the line above, it depends on that line whether you have a new line indented with tabs or spaces.

For deleting text you have several choices depending on what you want to delete. To simply delete backwards perhaps to correct a typo you will use the BACKSPACE key. This key deletes the character right from the

current caret position and the caret moves one character to the right. Note that a carriage-return (the character that causes line breaks) is treated as a simple character here. If you press the BACKSPACE key at the beginning of a line the carriage-return at the end of the line above the current line is deleted and the current line will be concatenated to the line above.

Another key for deleting is the DEL key, which simply deletes the character at the current text cursor position, that is the character right under the caret.

If you want to delete a larger part of the text, such as a whole line or the part of the line from the current cursor position to the end of the line, there are two special key combinations for that.

- Press Y while holding the Ctrl key down to delete the current line and
- press Q in combination with the Ctrl key to delete the rest of the line starting at the current caret position.

For even larger parts you have to select the text you want to delete before pressing the DEL key. For selection you can either use the mouse (see chapter "Using the mouse") or the cursor keys respectively. To select text with the cursor keys simply hold down the Shift key while moving the text cursor as usual. You will see the highlighted area grow or shrink depending on the direction you move the caret.

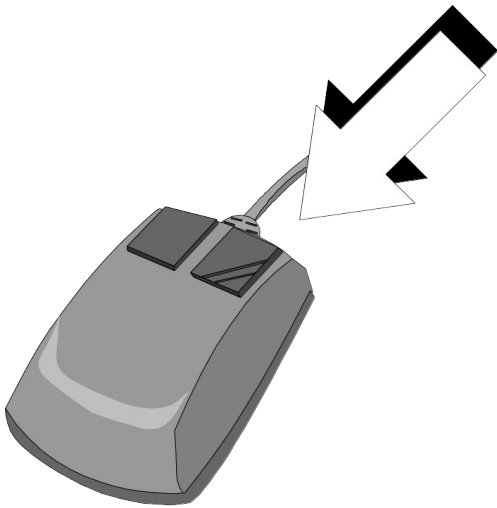
After you have selected all text you want to delete you simply press the DEL key in order to remove the highlighted part from the text.

6. Using the Windows Clipboard

Besides supporting the standard technique and accelerators for cutting (or copying) and pasting text, ARIS EDIT Lite has two shortcut methods:

Using the Right Mouse Button

To cut a block of text from a document and place it on the clipboard:



1. Press the right mouse button.
2. Drag the mouse through the text to be cut.
3. Release the mouse button.

To copy instead of cut, hold the Shift key down when releasing the mouse button.

To paste a block of text from the clipboard into a document:

1. Move the mouse to the location where the text should be pasted.
2. Press and release the right mouse button.

Using the Numeric Keypad

ARIS EDIT Lite support cut and paste using the numeric keypad in the fashion of the Brief editor:

To cut the current line, press the Gray Minus key

To copy the current line, press Gray Plus

To paste before the current line, press the Insert key

7. Matching Parentheses and Braces

Given a parenthesis or a brace, ARIS EDIT Lite can find the matching parenthesis or brace. To find the match:

1. Move the mouse to a brace or parenthesis.
2. Double click the left mouse button. The cursor will move to the matching brace or parenthesis.

Alternatively, using the keyboard

1. Move the caret to a brace or parenthesis.
2. Press Shift+F1. The cursor will move to the matching brace or parenthesis.

8. Searching for a Pattern

The Goto Search and Goto Replace commands search for a text pattern. The pattern can consist of ordinary characters, the anchor character, escape sequences, wildcard characters, and character classes. The pattern is applied to each line of the input text.

The anchor character, ^, matches the beginning of the line. To be recognized, it must be the first character in the pattern.

The escape sequences are

\a	alert
\b	backspace
\f	formfeed
\t	tab
\v	vertical tab
\x	the character x

The wildcard characters are

?	to match any single character
*	to match zero or more characters

A character class is specified as follows

[list of characters]

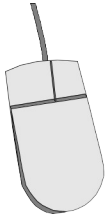
and matches any character in the list of characters.

9. Using the mouse

ARIS EDIT Lite uses the left and right mouse buttons.

For the left mouse button:

A single click moves the input caret to the character nearest the mouse cursor.



A double click selects the word containing the mouse cursor. If the cursor is on a parenthesis or brace instead of on text, double clicking moves the caret to the matching parenthesis or brace.

Shift + double click also selects the current word. If the cursor is on a file name, ARIS EDIT Lite attempts to open the file. It will search the INCLUDE environment string to find the file.

Moving the mouse with the button down (i.e., dragging) selects an arbitrary object. To select complete lines of text, keep the mouse at the left edge of a window.

For the right mouse button:

Single click pastes the contents of the clipboard at the mouse cursor.

Dragging selects an arbitrary object. Upon releasing the button, the object is cut to the clipboard.

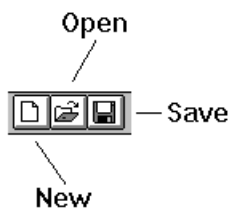
Shift + dragging copies the object instead of cutting it.

10. The smart icon bar

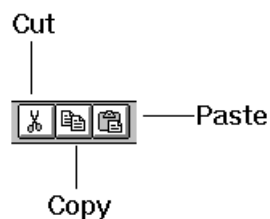
The smart icon bar is located just under the menu of ARIS EDIT Lite and allows single click access to several often used functions.



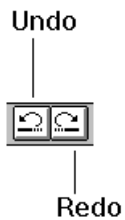
The picture above shows the icon bar completely. You will note that the spacing divides it into several sections. Each section belongs to a certain group of commands which will be explained in this chapter.



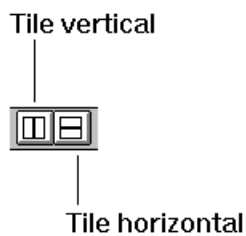
The first group consists of three buttons, which are all related to file operations. The first button creates a new empty window and thereby causes the same function as if you select "New" from the file menu. The second button corresponds to the topic "Open..." from the same menu and the third button saves the current file to disk.



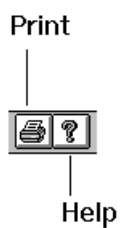
The next group of three buttons corresponds to the major functions of the edit menu. To cut, copy or paste text simply press the according button.



The next two buttons are associated to the undo and redo commands of the edit menu. To undo the last editing operation press the first button in this group, to reverse the last undo operation press the second button.



These two buttons rearrange the currently opened windows. The first button tiles the windows vertical and the second horizontal. However, with a large number of open windows pressing each button may arrange the windows in the same sizes and locations.



The first of the last two buttons prints the current file and thereby is equal to the topic "Print..." in the file menu. The second button activates the help of ARIS EDIT Lite and shows you the table with its keyboard layout.

11. The keyboard layout of ARIS EDIT Lite

Alt+BkSp	Edit Undo
Shift+BkSp	Edit Redo
Ctrl+Ins	Edit Copy
Ctrl+Del	Edit Cut
Shift+Ins	Edit Paste
Grey Plus	Edit Copy on the current line
Grey Minus	Edit Cut on the current line
Insert	Edit Paste before the current line
Ctrl+L	Goto Line
Ctrl+S	Goto Search
Ctrl+R	Goto Replace
Ctrl+Y	Delete the current line
Ctrl+G	File Grep
Ctrl+P	Run program
Ctrl+Q	Delete to the end of line
Ctrl+W	Highlight current word
Ctrl+Home	Go to the beginning of file
Ctrl+End	Go to the end of file
Ctrl+Right	Go to start of next word
Ctrl+Left	Go to start of previous word
F1	Help on ARIS EDIT Lite
Shift+F1	Load file under cursor
F2	Save current file
F5	Search forwards for a character
Shift+F5	Search backwards for a character
F3	Run the keyboard macro
Shift+F3	Start recording the keyboard macro
F4	Undo change of location in the current file
Shift+F4	Redo change of location in the current file
Ctrl+F4	Close current document window
Ctrl+F6	Switch to next document window